

# Learning Together

## PARENTAL

### involvement

*...is about supporting pupils and their learning. It is about parents and staff working together in partnership to help children become more confident learners.*

*...can be considered as active engagement in learning. This can take place in a variety of settings such as schools, the community, through Family Learning and learning at home.*

## PARENTAL

### engagement

## FAMILY

### learning

*...family members learning together as and within a family with a focus on intergenerational learning. Family learning can also be designed to enable parents to learn how to support their children's learning.*



*...the learning which happens in the home, outdoors, community. It can take place through everyday activities that families already do and can overlap with aspects of organised or active learning activities.*

at

## LEARNING

### home



**PARENTS INVOLVED in the LIFE and WORK of the SCHOOL**

## PARENTAL involvement

Parents and teachers working as partners

Shift in emphasis away from the relationship between parents and schools

Focus on relationship between parents and their child's learning



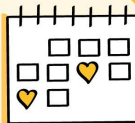
Intergenerational LEARNING



**SHARED ACTIVITIES** are designed to enable parents to learn how to support their child's learning



OUTCOME-FOCUSED



**LEARNING at home**  
Everyday activities



THE LEARNING which HAPPENS in the HOME, OUTDOORS and/or in the COMMUNITY

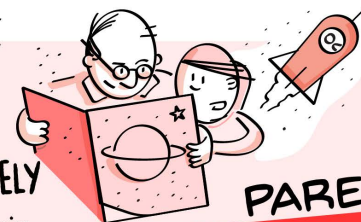


## FAMILY Learning

FAMILIES LEARNING TOGETHER

Builds on what families already do to help children's learning

**PARENTS ACTIVELY INVOLVED in their CHILD'S LEARNING**

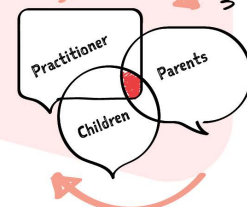


## PARENTAL engagement

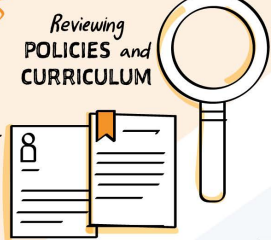
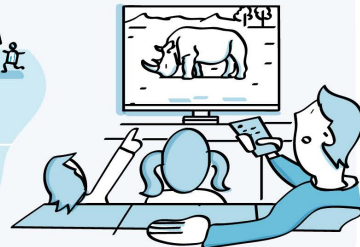
Supportive home learning environment



Supported by discussion



**Including organised or active learning opportunities**



## AIMS AND RATIONALE

*The purpose of our strategy is to ensure excellence and equity in parental involvement and engagement, family learning and learning at home within our schools. It aims to:*

*Aims and Rationale:*

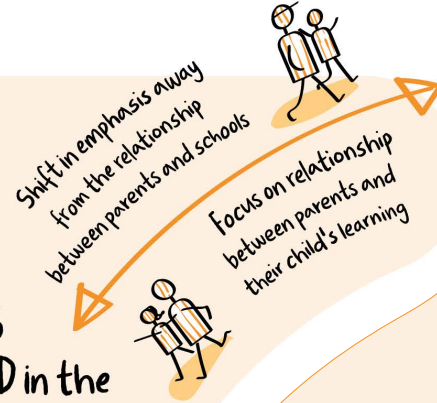
- *Ensure that parents are supported to be fully involved in the life and work of their children's early learning and childcare setting or school*
- *encourage and support collaborative partnerships between staff, parents and families*
- *get the right support in place so that parents can engage in their child's learning*
- *expand access to family learning opportunities which meet participants needs*
- *improve the quality of all communication between staff, parents and families*
- *improve the skills of leaders, front-line staff and support staff*

*Education Scotland*





**PARENTS  
INVOLVED** in the  
**LIFE and WORK**  
of the **SCHOOL**



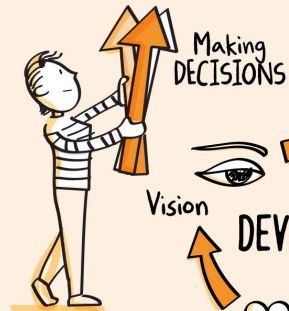
**PARENTAL**

## **involvement**

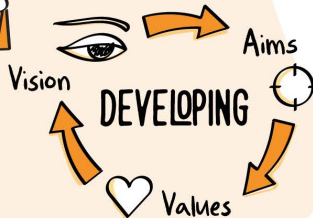
*Parents and teachers working as partners*



Parent  
COUNCIL



Making  
DECISIONS



Working  
GROUPS

Reviewing  
POLICIES and  
CURRICULUM



PLANNING  
IMPROVEMENT

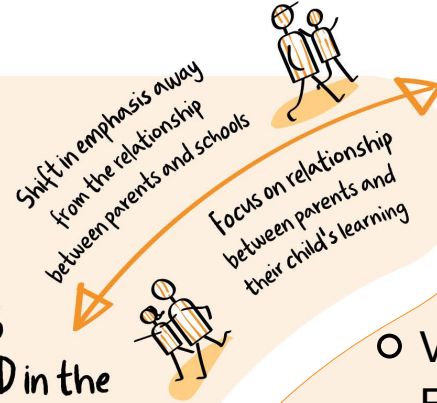
Parents and teachers working as partners where parents are involved in the life and work of the ELC setting and school.

This can be:

- In the Parent Council
- Working Groups to take forwards improvement priorities identified in the school's improvement plan and help build parent's understanding of how these support their child's learning
- Planning improvement together, supporting the school's aims, vision and values when making decisions
- Volunteering



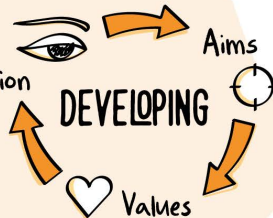
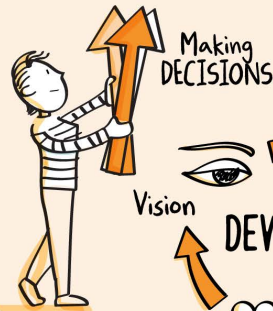
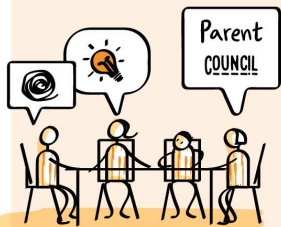
**PARENTS INVOLVED** in the  
**LIFE and WORK**  
of the **SCHOOL**



**PARENTAL**

**involvement**

*Parents and teachers working as partners*



Reviewing  
POLICIES and  
CURRICULUM



**PLANNING  
IMPROVEMENT**

## What can parents do?

- Volunteering in ELC setting and school, on trips or at ELC setting and school and Parent Council events
- Offer to talk to pupils about your job.
- Give feedback when asked – in surveys and questionnaires, on your child's report.
- Tell the ELC setting and school if you or your child are worried about anything.
- Go to parents' evenings to find out about your child's progress.
- Give your opinion when you are asked about decisions being made in ELC setting and school.
- Find out who is on the Parent Council and how you can get in touch with them.
- Offer to take part in focus groups.
- Get involved in how funding decisions are made.

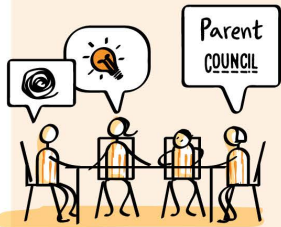


**PARENTS INVOLVED in the LIFE and WORK of the SCHOOL**

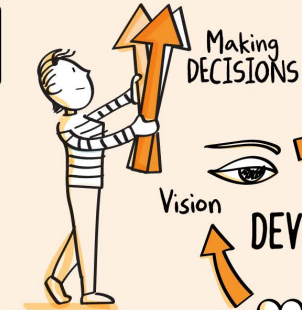
**PARENTAL**

**involvement**

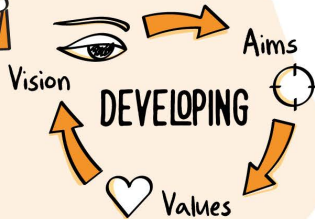
*Parents and teachers working as partners*



Parent  
COUNCIL



Making  
DECISIONS



Vision

DEVELOPING

Aims

Values

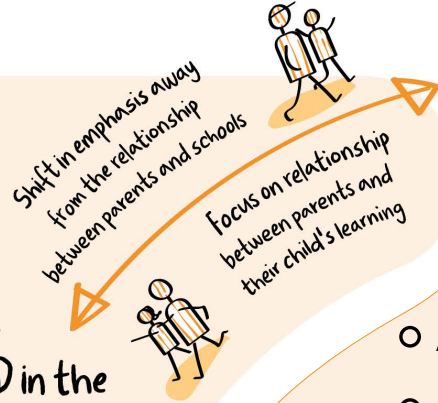


Working  
GROUPS

Reviewing  
POLICIES and  
CURRICULUM



PLANNING  
IMPROVEMENT



Shift in emphasis away  
from the relationship  
between parents and schools

Focus on relationship  
between parents and  
their child's learning

## What can ELC settings and schools do?

- Ask for parents to help at ELC setting and school events.
- Provide appropriate training and support for all parents who are volunteering in the ELC setting and school
- Provide clear and regular communication from ELC setting and school to home.
- Provide ELC setting and school information in relevant languages in addition to English.
- Make sure that parents know how to get in touch with the ELC setting and school.
- Make good use of information technology to communicate with parents
- Consult parents on ELC setting and school decisions.
- Support the Parent Council to be representative of the wider parent body.
- Include parents on working groups and in improvement planning activities.
- Share examples of 'you said, we did'

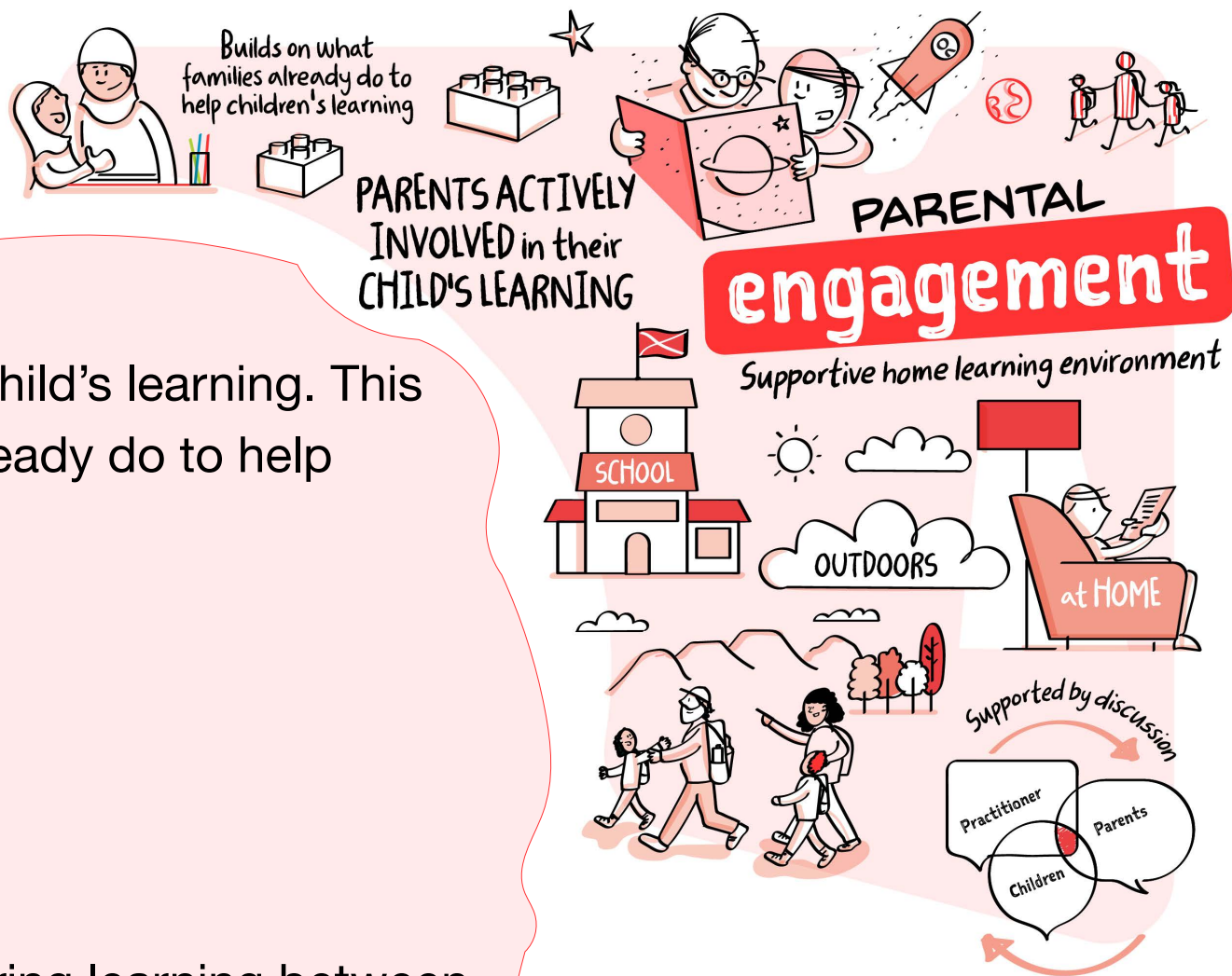


Parents actively involved in their child's learning. This helps to build on what families already do to help children's learning.

This can be:

- Learning in the home
- Learning outdoors
- Learning in the community

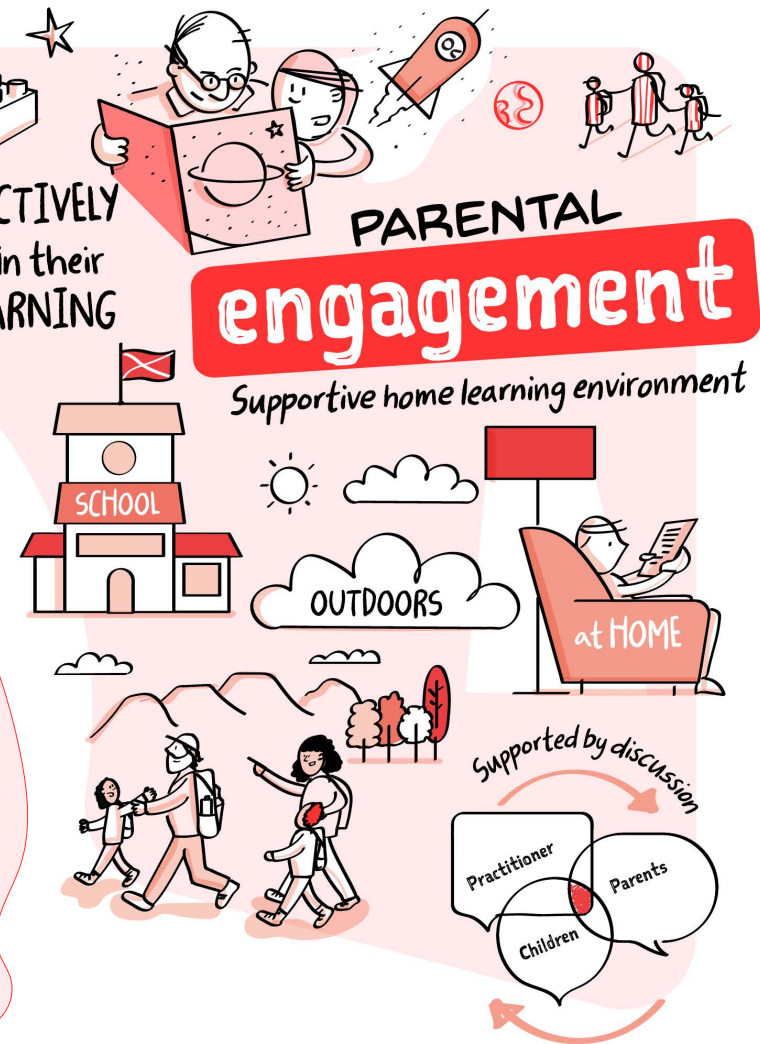
Supported by discussion and sharing learning between the child, school staff and children





## What can parents do?

- Help your child get to ELC setting and school every day on time.
- Ask your child about their ELC setting and school day.
- Get to know who your child's friends are.
- Let the ELC setting and school know if your child is going to be absent.
- Find out what your child needs to take to ELC setting and school with them - pencil, gym shoes.
- Support your child at ELC setting and school events, e.g. football match, ELC setting and school concert.
- Talk to your child about their learning, using information shared by ELC setting and school for this.
- Come along to Parents Evenings and ELC setting and school events.
- Ask your child what home learning they have to do and when it should be done by.



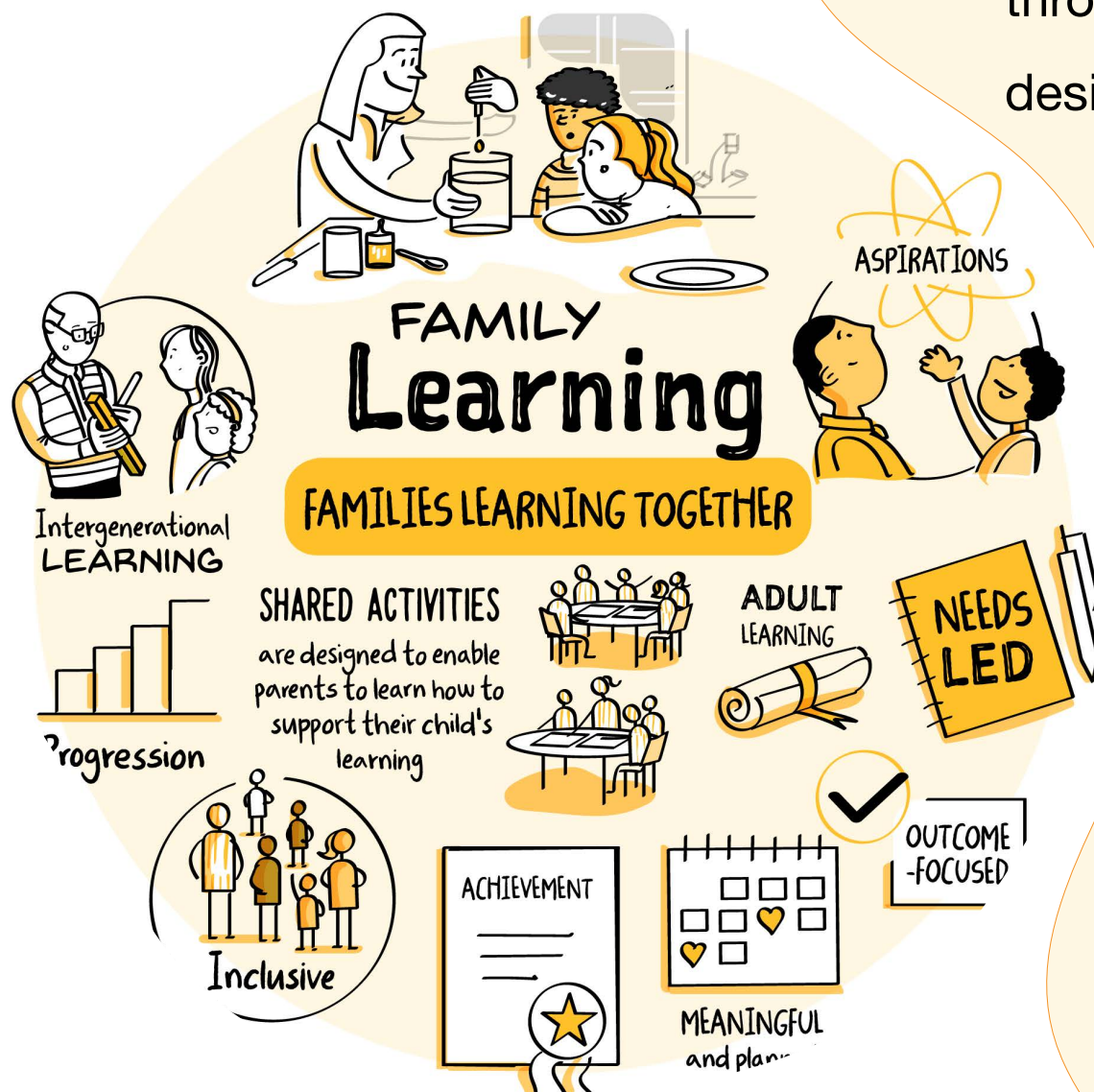




## What can ELC setting and schools do?

- Be welcoming and respectful to all parents.
- Arrange for families to come together and play, talk about health issues, find out about learning.
- Help parents to feel confident in their parenting ability and skills.
- Know where professional support and help can be made available for families if necessary.
- Share with families community and outdoor opportunities within their local area and Edinburgh.
- Talk to parents and carers about their child's learning and give suggestions where appropriate for helpful learning activities.
- Share home learning that is meaningful and relevant to the context of the ELC setting and school.

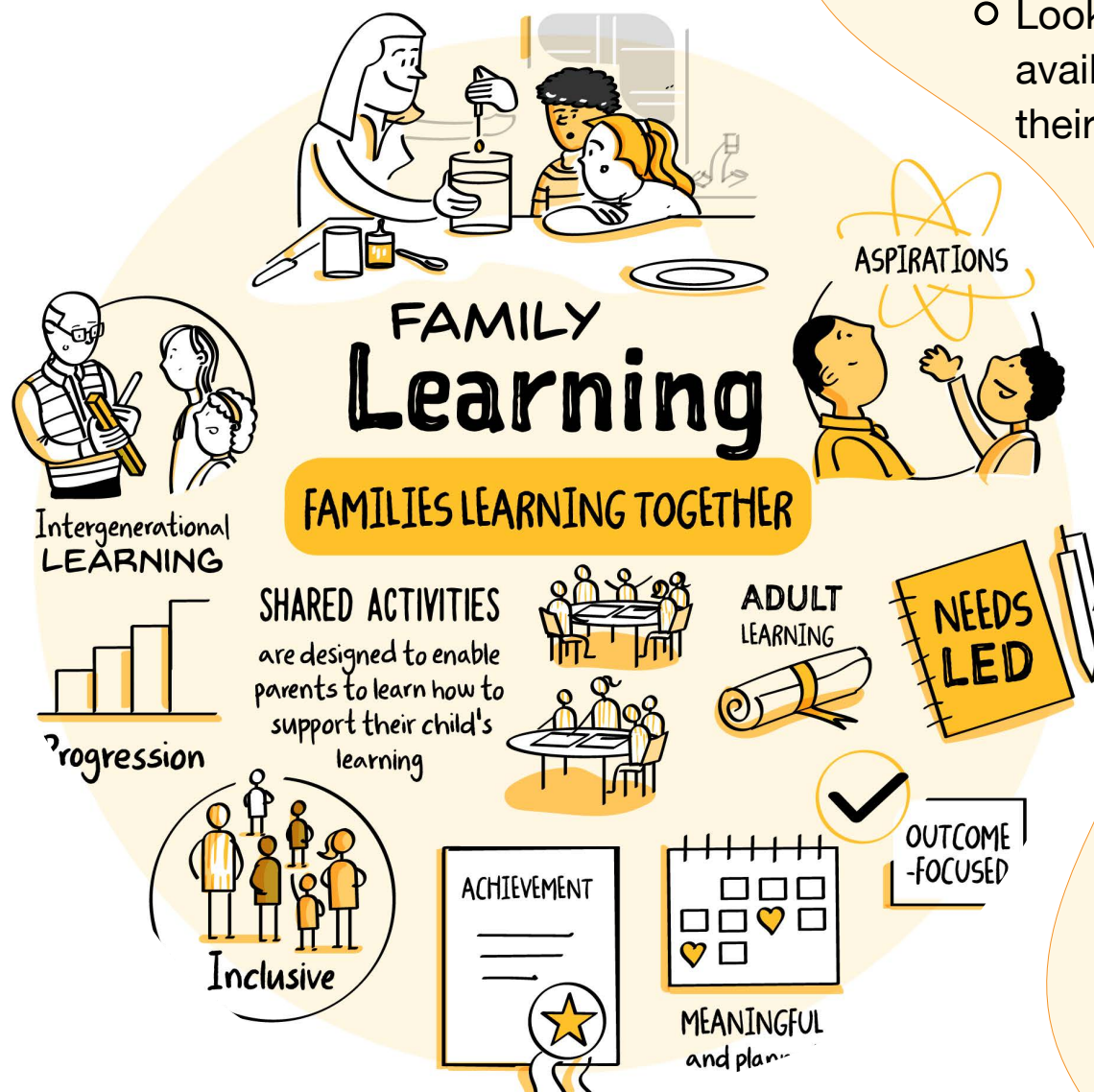




This is where families learn together through shared activities that are designed to enable parents to support their child's learning. It is needs-led, inclusive, meaningful and planned.

This can involve:

- o Intergenerational learning
- o Adult learning



## What can parents do?

- Look into programmes/for information that is available that will support parents and carers to help their child, for example, family literacy/numeracy.
- Use City of Edinburgh website :

[Parenting Support - The City of Edinburgh Council](#)

[Working in Partnership with parents - The City of Edinburgh Council](#)

- Talk to ELC setting and schools and early learning centres to let them know what you would like more information about.





## What can ELC setting and schools do?

- Get the right support in place so that parents can engage in their child's learning.
- Ensure that parents are supported to be fully involved in the life and work of their child's early learning and childcare setting or ELC setting and school.
- Encourage and support collaborative partnerships between practitioners, parents and families.
- Expand access to family learning opportunities which meet the needs of participants.
- Review the quality of all communication between practitioners, staff, parents and families and make any relevant changes.

This can be learning which happens in the home, outdoors or in the community and involves everyday activities.

This can be:

- Football
- Cycling
- Shopping
- Playing games
- Watching certain TV programmes together



LEARNING  
at **home**  
Everyday activities



THE LEARNING which  
HAPPENS in the HOME,  
OUTDOORS and/or in  
the COMMUNITY



Including  
organised or active learning  
opportunities



## What can parents do?

- Play, read, write, and count with your child.
- Talk to your child about what they want to do when they leave ELC setting and school and what they need to do in order to achieve that.
- Support and encourage your child's interests.
- Do things together as a family, for example, cooking, sport, watching films.



LEARNING  
at **home**  
Everyday activities



THE LEARNING which  
HAPPENS in the HOME,  
OUTDOORS and/or in  
the COMMUNITY



Including  
organised or active learning  
opportunities





## What can ELC setting and schools do?

- Make sure information about homework and deadlines is available to parents.
- Put on relevant information sessions, eg about ELC setting and school subjects, careers, how to support your child's learning in literacy and numeracy.
- Share examples of ELC setting and school learning so that parents and carers can see what is happening in class.
- Provide feedback, comments and next steps so that parents know how to support their child to make progress.



LEARNING  
at **home**  
Everyday activities



THE LEARNING which  
HAPPENS in the HOME,  
OUTDOORS and/or in  
the COMMUNITY



Including  
organised or active learning  
opportunities

